

HOLROYD

BESPOKE SURFACE HEATING ELEMENTS

APPLICATIONS:

The HBD heater is specifically designed for melting or reducing the viscosity of soaps, fats, waxes, varnishes and oil based products. The diameter of the base enables use on all sizes of steel drums up to 45 gallons (200 Lt). Heat is provided by a 900W silicone rubber insulated heater mat, providing an even distribution of heat from the base. If a rapid heat up is required or solid mediums are involved requiring higher power input, side drum heaters can be used in conjunction with the HBD. Alternatively an insulation jacket can be used.

MAIN POINTS:

- Robust Steel Construction
- IP40 Protection
- Even Heat Over Platen Area
- 110V or 230V Option
- 0-150°C Thermostat
- 2 Metre Armoured Power Cable
- High Temperature Tolerances
- Suitable for Drums up to 200litres
- Usable Alongside Other Drum Heaters
- Ideal for Reducing Viscosity in Oily or Fatty Products
- Tapered Edges for Drum Location



QUALITY



RELIABILITY



CREATIVITY



SERVICE



COMMUNITY

+44 (0)1799 523177

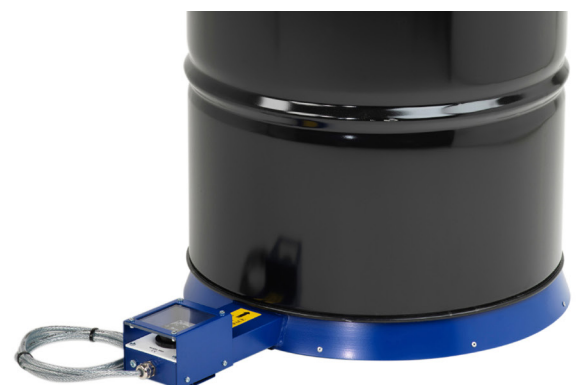
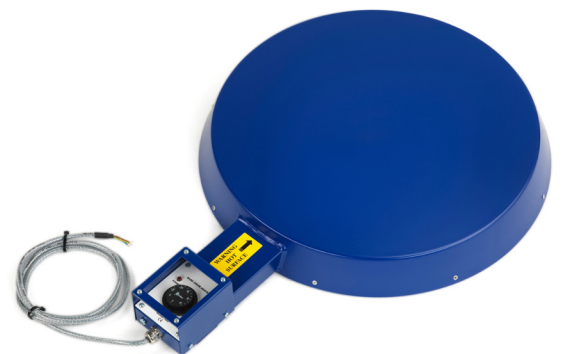
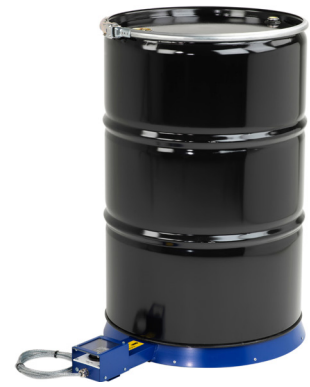
SALES@HOLROYDCOMPONENTS.COM

HOLROYD COMPONENTS LTD
SHIRE HILL INDUSTRIAL ESTATE
SAFFRON WALDEN
ESSEX CB11 3AQ



ISO9001:2015
FM558985

WWW.HOLROYDCOMPONENTS.COM



CONSTRUCTION:

Manufactured from 2mm thick mild steel for extra rigidity on uneven surfaces, with tapered edges for safe ease of drum location and is protected by a resilient high temperature coating. Temperature adjustment is via a front aperture in the control unit, with neon's indicating power on and load switching viewed through a window in the control unit top. Heat is supplied via a silicone insulated etched foil heater giving a uniform temperature across the platen face. Insulated with 50mm of high density rock wool, heat transference to the base is minimal.

HEALTH AND SAFETY:

The HBD Base drum heater is manufactured to conform to the EEC low voltage and EMC directives and CE marked accordingly. It is advised that power to the heater be disconnected when the container is either empty or being filled, or upon installation or removal of the drum. It is recommended that the unit be operated in a dry environment with the container vented to avoid build up of internal pressure.

TECHNICAL DATA

PLATEN SIZE	Height - 70mm Diameter Top - 550mm Base - 600mm
CONTROL UNIT	Height - 105mm Protrusion - 280mm
OVERALL UNIT	Length - 880mm Width - 600mm Height - 105mm
WEIGHT	15KG
POWER RATING	110V or 230V 900W
CONTROL	0-150°C Adjustable Thermostat
POWER CABLE	2M SY Type Armoured
ELEMENT	Silicone Insulated Etched Foil Heater Mat
INSULATION	50mm Rockwool

